

In-the-box grid projects



Adjustable viewing angle



In-built antenna controls



Antenna mini-cart

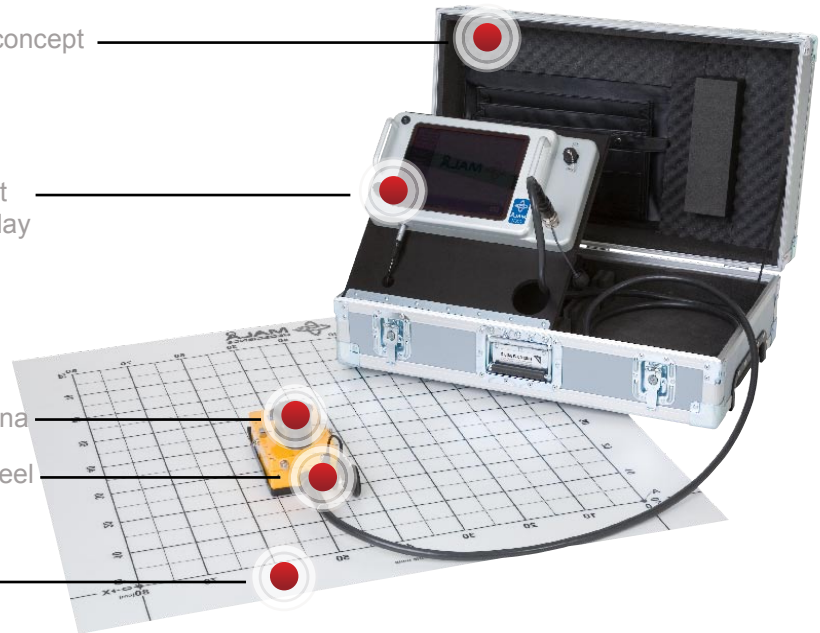
1. Portable, in-the-box concept

2. Integrated control unit and user interface/ display

3. High frequency antenna

4. Single measuring wheel

5. Durable transparent survey sheet



# CX Concrete Imaging System

Ground Penetrating Radar for Structural Investigations

The CX Concrete Imaging System from MALÅ is an easy to use, Ground Penetrating Radar (GPR) system designed for the non-destructive investigation and imaging of concrete and other structure.

Construction professionals involved in the cutting, coring or drilling of concrete structure require a safe and reliable means of inspecting work areas to locate and identify

hidden features that could cause damage to machinery, or pose a danger to the operator or the structure itself during these activities.

The CX system allows you to scan concrete structure simply and safely and present data clearly for real-time and in-the-box data acquisition, display and analysis. It is a quicker, safer and more cost effective option than competing systems or traditional radiographic testing methods.

## Main Applications

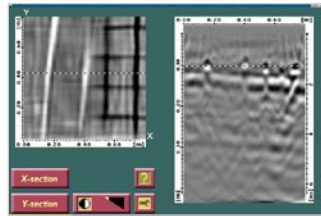
The CX system is the tool of choice for those who need to quickly and easily investigate areas prior to cutting, coring or drilling. Other applications include:

- Concrete/ Structure inspection
- Measure depth of cover or slab thickness
- Measure layer thickness
- Locate and map reinforcing support structure
- Locate non-metallic features, i.e. heating/ water pipes
- Quality assessment & control
- Void detection

## Specific Features

The product's simple yet ergonomic and field rugged design, intuitive user interface and clear display is testament to its success and it remains as the number one choice in its field.

- Minimal set-up for fast start-up
- Quick and simple one button operation
- In-the-box processing and 2.5D imaging analysis
- Supports EM (50/ 60 Hz) functionality
- Real time locates with back-up cursor for quick and accurate
- Detects metallic and non-metallic objects/ features
- Compact, portable and field rugged design – IP67



## System Configuration

The CX system comes as standard in a portable field rugged case, but can also be used in conjunction with an optional shoulder harness for greater portability and flexibility of use, depending on the application and user requirements.

The CX system was the World's first to combine GPR with the more common Electro-Magnetic (EM) technology by way of a fully integrated 50/ 60 Hz sensor. This combination allows the detection of both metallic and non metallic objects and features, but also aids in the detection and location of metallic conductors energized with 50/ 60 Hz energy within the structure under investigation; thereby offering an additional element of safety to the system.

## Technical Specification

- Power supply:** External 12V or Li-Ion 12V/12Ah battery  
**Operating time:** 6h with battery pack  
**Operating temp:** -20° to +50°C or 0° to 120 °F  
**Environmental:** IP67  
**Display:** 10.4" Color TFT Ultra-Hi-Brite or trans-reflective LCD  
**Dimensions:** 74 x 43 x 28 cm/ 29" x 17" x 11" (in-the-box)  
**Weight:** 20 kg/ 44 lb (total in-the-box, including antenna)  
**Antennas:** The CX system fully supports MALÅ's range of High Frequency (HF) Shielded Antennas allowing the user to choose the best antenna for their given application and obtain unsurpassed accuracy and data clarity. See High Frequency (HF) Shielded Antennas sales sheet.

**See our webpage for latest information**

### Head Office

MALÅ GeoScience AB  
 Skolgatan 11, SE-930 70  
 Malå, Sweden  
 Phone: +46 953 345 50  
 Fax: +46 953 345 67  
 E-mail: sales@malags.com

### Sales Offices

**USA:** MALÅ GeoScience USA, Inc., 2040 Savage Rd. Box 80430, Charleston, SC 29416  
 Phone: +1 843 852 5021, Fax: +1 843 769 7397, E-mail: sales.usa@malags.com

**China:** MALÅ GeoScience (China), Room 2604, Yuan Chen Xin BLDG, No.12 Yu Min Road Chao Yang District, Beijing 100029  
 Phone: +86 10 8225 0728, Fax: +86 10 8225 0815, E-mail: sales@malags.com